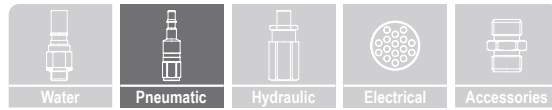


rtc[®]

COUPLING TECHNOLOGY
[www.rtc-couplings.com](http://www rtc-couplings.com)



055

rtc TYPE



Temperature Range - Temperaturbereich

Nitrile (N) -20°C + 100°C (- 4°F + 212°F)
 FPM (V) -20°C + 180°C (- 4°F + 356°F)
 EPDM (Ethylene Propylene) -40°C + 150°C (- 40°F + 302°F)

Max. Working Pressure - Max. Betriebsdruck

rtc 055.05 25 bar (362 PSI)
 rtc 055.07 25 bar (362 PSI)
 rtc 055.10 25 bar (362 PSI)

Flow size - Nennweite

rtc type 055.05 5.2 mm
 rtc type 055.07 7 mm
 rtc type 055.10 10.5 mm

Material of Standard Coupler

Material für die Standardversion

Socket body - Steel nickel plated -
 Kupplungsgrundkörper - Stahl vernickelt
 Valve - Ventill - Brass nickel plated -
 Ventil - Messing vernickelt
 Springs - Federn - Stainless Steel - Edelstahl
 Locking Pin - Sicherungsstift - Stainless Steel - Edelstahl
 Locking Ring - Sprengling - Stainless Steel - Edelstahl

Plug - Nippel - Steel nickel plated -
 Stahl vernickelt

Options / Optionen	Add	Example Code
Brass Messing	MS	055.05 SFO 13- MS
Steel Stahl	ST	055.05 SFO 13- ST
Stainless Steel AISI 303 Edelstahl AISI 303	S3	055.05 SFO 13- S3
Stainless Steel AISI 316L Edelstahl AISI 316L	S6	055.05 SFO 13- S6

Material of Brass Coupler - MS Version

Material für die Messingversion - MS Version

Socket body - Brass -
 Kupplungsgrundkörper - Messing
 Valve - Ventill - Brass - Messing
 Springs - Federn - Stainless Steel - Edelstahl
 Balls - Kugeln - Stainless Steel - Edelstahl
 Locking Ring - Sprengling - Stainless Steel - Edelstahl

Plug - Nippel - Brass - Messing

Material of Stainless-Steel Coupler - SS Version

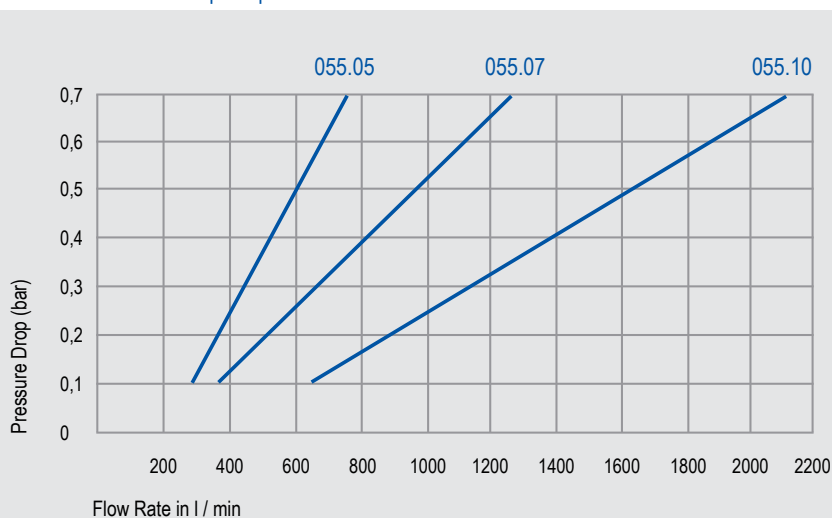
Material für die Edelstahlversion - SS Version

Socket body - Stainless Steel -
 Kupplungsgrundkörper - Edelstahl
 Valve - Ventill - Stainless Steel - Edelstahl
 Springs - Federn - Stainless Steel - Edelstahl
 Balls - Kugeln - Stainless Steel - Edelstahl
 Locking Ring - Sprengling - Stainless Steel - Edelstahl

Plug - Nippel - Stainless Steel - Edelstahl



Flow Rate vs Pressure Drop Graph / Durchflussrate vs Druckabfall



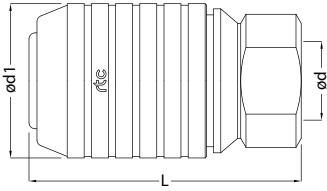
055
rtc TYPE

rtc TYPE 055

Female thread socket / Kupplung mit Innengewinde



Sockets / Kupplungen



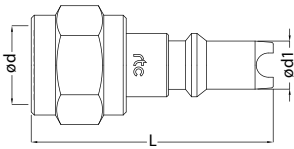
Size Größe	Order No / Bestellnr.	Ød	Ød1	L	HEX.
05	055.05 SFO 13	BSP 1/4	25.5	45	19
05	055.05 SFO 17	BSP 3/8	25.5	45	19
07	055.07 SFO 17	BSP 3/8	28.5	54	23
10	055.10 SFO 21	BSP 1/2	33.5	61	27

rtc TYPE 055

Female thread plug / Nippel mit Innengewinde



Plug / Nippel



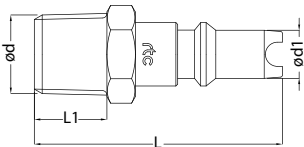
Size Größe	Order No / Bestellnr.	Ød	Ød1	L	HEX.
05	055.05 PFF 13	BSP 1/4	8	40	17
05	055.05 PFF 17	BSP 3/8	8	42	20
07	055.07 PFF 17	BSP 3/8	10.5	49	22
10	055.10 PFF 21	BSP 1/2	14.5	58	27

rtc TYPE 055

Male thread plug / Nippel mit Aussengewinde



Plug / Nippel



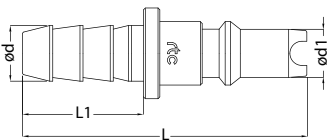
Size Größe	Order No / Bestellnr.	Ød	Ød1	L	HEX.
05	055.05 PRF 13	BSPT 1/4	8	40	14
05	055.05 PRF 17	BSPT 3/8	8	42	17
07	055.07 PRF 17	BSPT 3/8	10.5	47	17
10	055.10 PRF 21	BSPT 1/2	14.5	55	22

rtc TYPE 055

Standard hose tail plug / Nippel mit gerader Standard - Schlauchtülle



Plug / Nippel



Size Größe	Order No / Bestellnr.	Ød	Ød1	L	L1
05	055.05 PHF 08	8 mm	8	47	20
05	055.05 PHF 10	10 mm	8	52	25
07	055.07 PHF 10	10 mm	10.5	56	25
10	055.10 PHF 10	10 mm	14.5	60	25
10	055.10 PHF 12	12 mm	14.5	65	30
10	055.10 PHF 14	14 mm	14.5	65	30

A man with dark, wavy hair and a light beard, wearing a light blue button-down shirt, is shown in profile, looking towards the left. He has a thoughtful expression. The background is an industrial setting with yellow and blue elements.

**“INOVATIVE SOLUTIONS FOR
INDIVIDUAL REQUIREMENTS...”**

Juan Ruiz [General Manager / RTC Spain]