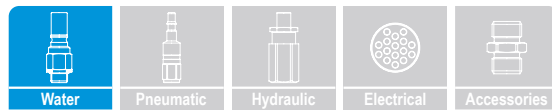




# rtc<sup>®</sup>

COUPLING TECHNOLOGY  
[www.rtc-couplings.com](http://www rtc-couplings.com)



# 152

rtc TYPE



**Temperature Range - Temperaturbereich**

FPM (V)	-20°C + 180°C (- 4°F + 356°F)
EPDM (E)	-40°C + 150°C (- 40°F + 302°F)
FFKM (W)	0°C +270°C (+23°F +518°F)

**Max. Working Pressure - Max. Betriebsdruck**

rtc 152.03	60 bar (870 PSI)
rtc 152.06	60 bar (870 PSI)
rtc 152.08	60 bar (870 PSI)
rtc 152.10	60 bar (870 PSI)
rtc 152.12	60 bar (870 PSI)
rtc 152.16	60 bar (870 PSI)
rtc 152.20	60 bar (870 PSI)
rtc 152.25	40 bar (580 PSI)
rtc 152.32	25 bar (362 PSI)

**Flow size - Nennweiten**

rtc 152.03	3 mm
rtc 152.06	6 mm
rtc 152.08	8 mm
rtc 152.10	10 mm
rtc 152.12	12 mm
rtc 152.16	16 mm
rtc 152.20	20 mm
rtc 152.25	25 mm
rtc 152.32	32 mm

**Material**

Socket Body- Kupplungsgrundkörper	Brass - Messing
Sleeve - Hülse	Stainless Steel - Edelstahl
Valve - Ventil	Brass - Messing
Locking Ring - Sprengring	Stainless Steel - Edelstahl
Balls - Kugeln	Stainless Steel - Edelstahl
Seals - Dichtungen	FKM (V)

Plug - Nippel	Stainless Steel - Edelstahl
Back part Nippel - Nippel Hinterteil	Brass - Messing

**Standard version**

FPM (V)  
Leakage free design  
Special designed valve for high flow rate.

**Standardversion**

- FPM (V)  
- Leckagefrei  
- Spezielle Ventiltechnik ermöglicht hohen Durchfluss

**Options - Optionen**

**E** EPDM Seal - EPDM Dichtung  
**W** FFKM Seal - FFKM Dichtung

**Using Area**

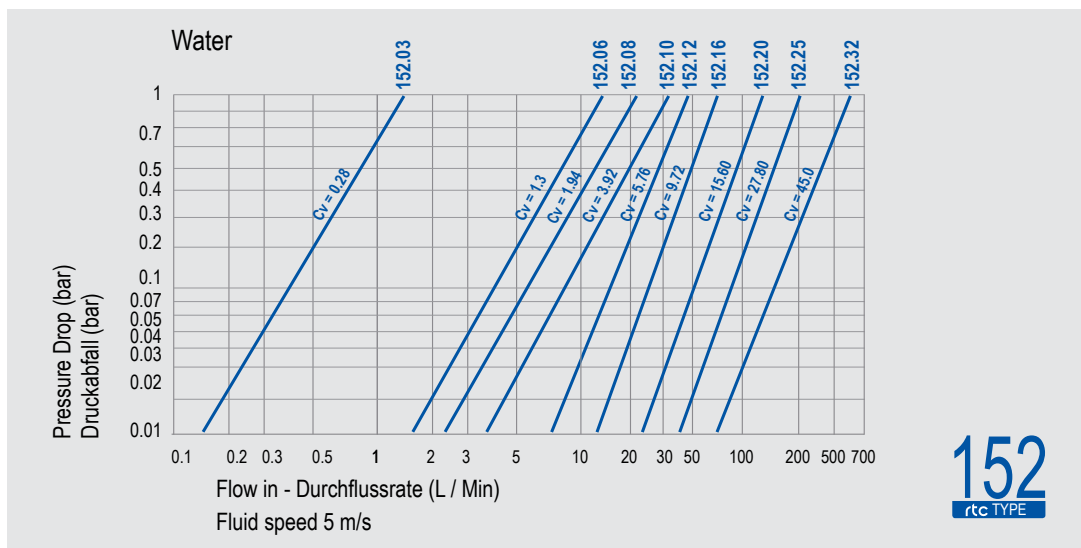
- On temperature regulation applications  
with hot or cold water, oil etc.  
- Blow moulding industry  
- Injection moulding industries.  
- On steam line.

**Anwendungsbereiche**

- Zuleitung für die Temperierung / Druckluft  
- Blasformmaschinen Industrie  
- Kühlung mit Öl oder Wasser  
- Kunststoffindustrie



Flow Rate vs Pressure Drop Graph / Durchflussrate vs Druckabfall



**152**  
rtc TYPE

**rtc** TYPE 152

Female thread socket / Kupplung mit Innengewinde



Socket / Kupplung	Size / Größe	Order No / Bestellnr.	Ød	Ød1	L	HEX.
	03	152.03 SFB 10	BSP 1/8	16	40	13
		152.03 SNB 10	NPT 1/8	16	40	13
	06	152.06 SFB 13	BSP 1/4	22	43	30
		152.06 SNB 13	NPT 1/4	22	43	30
	08	152.08 SFB 13	BSP 1/4	26.5	43	22
		152.08 SNB 13	NPT 1/4	26.5	43	22
		152.08 SFB 17	BSP 3/8	26.5	43	22
		152.08 SNB 17	NPT 3/8	26.5	43	22
	10	152.10 SFB 17	BSP 3/8	30	54	25
		152.10 SNB 17	NPT 3/8	30	54	25
	12	152.12 SFB 21	BSP 1/2	35	56	30
		152.12 SNB 21	NPT 1/2	35	56	30
	16	152.16 SFB 26	BSP 3/4	42	81	35
		152.16 SNB 26	NPT 3/4	42	83	35
	20	152.20 SFB 33	BSP 1	56	117	50
		152.20 SNB 33	NPT 1	56	117	50
	25	152.25 SFB 33	BSP 1	64	119	50
		152.25 SNB 33	NPT 1	64	119	50
		152.25 SFB 42	BSP 1-1/4	64	119	50
		152.25 SNB 42	NPT 1-1/4	64	119	50
32	152.32 SFB 48	BSP 1-1/2	81	149	65	
	152.32 SNB 48	NPT 1-1/2	81	149	65	

**rtc** TYPE 152

Male thread socket / Kupplung mit Aussengewinde



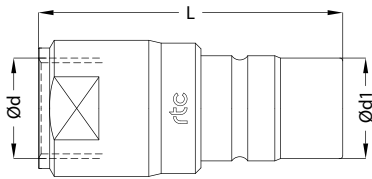
Socket / Kupplung	Size / Größe	Order No / Bestellnr.	Ød	Ød1	L	L1	HEX.
	03	152.03 SOB 10	BSP 1/8	16	39	7	14
		06	152.06 SOB 13	BSP 1/4	22	43	10
	152.06 SOB 17		BSP 3/8	22	43	10	20
	08	152.08 SOB 13	BSP 1/4	26.5	43	10	22
		152.08 SOB 17	BSP 3/8	26.5	44	11	22
	10	152.10 SOB 17	BSP 3/8	29	52	11	25
		152.10 SOB 21	BSP 1/2	29	53	12	25
	12	152.12 SOB 17	BSP 3/8	35	54	11	30
		152.12 SOB 21	BSP 1/2	35	55	12	30
	16	152.16 SOB 21	BSP 1/2	42	80	12	35
		152.16 SOB 26	BSP 3/4	42	83	16	35
	20	152.20 SOB 26	BSP 3/4	56	114	16	50
		152.20 SOB 33	BSP 1	56	117	19	50
	25	152.25 SOB 33	BSP 1	64	128	19	55
		152.25 SOB 42	BSP 1-1/4	64	128	19	55
	32	152.32 SMB 42	BSP 1-1/4	56	168	19	60
		152.32 SMB 48	BSP 1-1/2	56	168	19	60



Cylindrical female thread plug / Nippel mit Innengewinde zylindrisch

TYPE 152 **rtc**

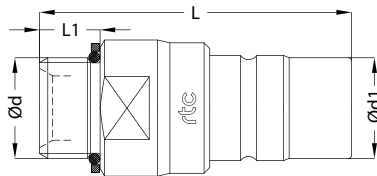
Plug / Nippel	Size / Größe	Order No / Bestellnr.	Ød	Ød1	L	HEX.
03		152.03 PFB 10	BSP 1/8	7.7	32.5	13
		152.03 PNB 10	NPT 1/8	7.7	32.5	13
06		152.06 PFB 13	BSP 1/4	11.7	44	17
		152.06 PNB 13	NPT 1/4	11.7	44	17
08		152.08 PFB 13	BSP 1/4	14.3	53	17
		152.08 PNB 13	NPT 1/4	14.3	53	17
		152.08 PFB 17	BSP 3/8	14.3	53	17
		152.08 PNB 17	NPT 3/8	14.3	53	17
10		152.10 PFB 17	BSP 3/8	17.5	64	25
		152.10 PNB 17	NPT 3/8	17.5	64	25
12		152.12 PFB 21	BSP 1/2	20.5	68	30
		152.12 PNB 21	NPT 1/2	20.5	68	30
16		152.16 PFB 26	BSP 3/4	27	73	35
		152.16 PNB 26	NPT 3/4	27	75	35
20		152.20 PFB 33	BSP 1	34	98	41
		152.20 PNB 33	NPT 1	34	99	41
25		152.25 PFB 33	BSP 1	41.5	97	50
		152.25 PNB 33	NPT 1	41.5	98	50
		152.25 PFB 42	BSP 1-1/4	41.5	97	50
		152.25 PNB 42	NPT 1-1/4	41.5	98	50
32		152.32 PFB 48	BSP 1-1/2	53	123	60
		152.32 PNB 48	NPT 1-1/2	53	123	60



Male thread plug / Nippel mit Aussengewinde

TYPE 152 **rtc**

Plug / Nippel	Size / Größe	Order No / Bestellnr.	Ød	Ød1	L	L1	HEX.
03		152.03 POB 10	BSP 1/8	7.7	32	7	13
06		152.06 POB 13	BSP 1/4	11.7	45	10	17
08		152.08 POB 13	BSP 1/4	14.3	52	10	22
		152.08 POB 17	BSP 3/8	14.3	53	11	22
10		152.10 POB 17	BSP 3/8	17.5	61	11	25
		152.10 POB 21	BSP 1/2	17.5	62	12	25
12		152.12 POB 17	BSP 3/8	20.5	66	11	30
		152.12 POB 21	BSP 1/2	20.5	67	12	30
16		152.16 POB 21	BSP 1/2	27	69	12	35
		152.16 POB 26	BSP 3/4	27	73	16	35
20		152.20 POB 26	BSP 3/4	34	92	16	41
		152.20 POB 33	BSP 1	34	95	19	41
25		152.25 POB 33	BSP 1	41.5	102	19	50
		152.25 POB 42	BSP 1-1/4	41.5	102	19	50
32		152.32 PMB 42	BSP 1-1/4	53	142	19	60
		152.32 PMB 48	BSP 1-1/2	53	142	19	60



**rtc** TYPE 152

Standard hose tail socket / Kupplung mit Standard Schlauchtülle



Socket / Kupplung

Size / Größe

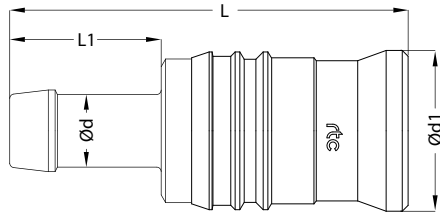
Order No / Bestellnr.

Ød

Ød1

L

L1



03

152.03 SHB 03  
152.03 SHB 06

3 mm  
6 mm

16  
16

50  
55

18  
23

06

152.06 SHB 06  
152.06 SHB 08

6 mm  
8 mm

22  
22

56  
56

23  
23

08

152.08 SHB 08  
152.08 SHB 10

8 mm  
10 mm

26.5  
26.5

58  
58

23  
23

10

152.10 SHB 10  
152.10 SHB 12

10 mm  
12 mm

30  
30

65  
70

23  
28

12

152.12 SHB 12  
152.12 SHB 16

12 mm  
16 mm

35  
35

69  
69

28  
28

16

152.16 SHB 16  
152.16 SHB 19

16 mm  
19 mm

42  
42

91  
97

28  
33

**rtc** TYPE 152

Push to connect hose tail socket / Kupplung mit Schnellsteck Schlauchtülle



Socket / Kupplung

Size / Größe

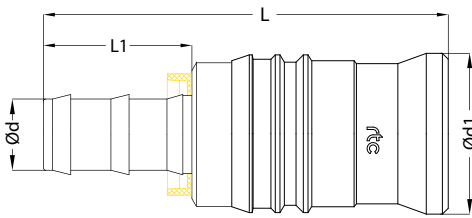
Order No / Bestellnr.

Ød

Ød1

L

L1



06

152.06 SPB 10

10 mm

22

57

24

08

152.08 SPB 10  
152.08 SPB 10

8 mm  
10 mm

26.5  
26.5

59  
59

24  
28

10

152.10 SPB 10  
152.10 SPB 13

10 mm  
13 mm

30  
30

66  
71

24  
28

12

152.12 SPB 13  
152.12 SPB 16

13 mm  
16 mm

35  
35

69  
69

28  
28

16

152.16 SPB 16  
152.16 SPB 19

16 mm  
19 mm

42  
42

92  
102

28  
38

**rtc** TYPE 152

Standard hose tail plug / Nippel mit Standard Schlauchtülle



Socket / Kupplung

Size / Größe

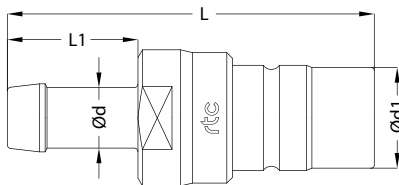
Order No / Bestellnr.

Ød

Ød1

L

L1



03

152.03 PHB 03  
152.03 PHB 06

3 mm  
6 mm

7.7  
7.7

43  
48

18  
23

06

152.06 PHB 06  
152.06 PHB 08

6 mm  
8 mm

11.7  
11.7

58  
58

23  
23

08

152.08 PHB 08  
152.08 PHB 10

8 mm  
10 mm

14.3  
14.3

64  
64

23  
23

10

152.10 PHB 10  
152.10 PHB 12

10 mm  
12 mm

17.5  
17.5

75  
80

23  
28

12

152.12 PHB 12  
152.12 PHB 16

12 mm  
16 mm

20.5  
20.5

81  
81

28  
28

16

152.16 PHB 16  
152.16 PHB 19

16 mm  
19 mm

27  
27

84  
89

28  
33



Push to connect hose tail plug / Nippel mit Schnellsteck Schlauchtülle

TYPE 152 **rtc**

Socket / Kupplung	Size / Größe	Order No / Bestellnr.	Ød	Ød1	L	L1
	06	152.06 PPB 10	10 mm	11.7	59	24
	08	152.08 PPB 10	8 mm	14.3	65	24
		152.08 PPB 10	10 mm	14.3	65	28
	10	152.10 PPB 10	10 mm	17.5	75	23
		152.10 PPB 13	13 mm	17.5	80	28
	12	152.12 PPB 13	13 mm	20.5	81	28
		152.12 PPB 16	16 mm	20.5	81	28
	16	152.16 PPB 16	16 mm	27	85	28
		152.16 PPB 19	19 mm	27	95	38