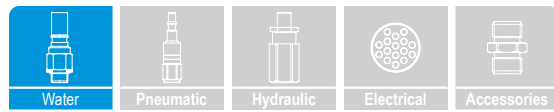




rtc[®]

COUPLING TECHNOLOGY
[www.rtc-couplings.com](http://www rtc-couplings.com)



106

rtc TYPE

NEW DESIGN!
SINGLE & DOUBLE Shut-Off!



Temperature Range - Temperaturbereich

Nitrile (N)	-20°C + 100°C (-4°F + 212°F)
FPM (V)	-20°C + 180°C (-4°F + 356°F)

Working Pressure - Betriebsdruck

rtc 106.25	10 bar (145 PSI)
rtc 106.33	10 bar (145 PSI)
rtc 106.42	10 bar (145 PSI)
rtc 106.50	10 bar (145 PSI)
rtc 106.63	10 bar (145 PSI)
rtc 106.110	10 bar (145 PSI)

Flow size - Nennweiten

rtc 106.25	25 mm
rtc 106.33	33 mm
rtc 106.42	42 mm
rtc 106.50	50 mm
rtc 106.63	63 mm
rtc 106.110	110 mm

Material

Socket Body - Kupplungsgrundkörper	Brass chrome plated - Messing verchromt
Sleeve - Hülse	Brass chrome plated - Messing verchromt
Springs - Federn	Stainless Steel - Edelstahl
Locking Ring - Sprengring	Stainless Steel - Edelstahl
Balls - Kugeln	Stainless Steel - Edelstahl
Seals - Dichtungen	Nitrile
Plug - Nippel	AISI 420 hardened - AISI 420 gehärtet

Standard version - Standardversion

Brass - Messing
NBR (N)

Options - Optionen

Stainless Steel - Edelstahl

Using Area

- On temperature regulation applications with hot or cold water, oil etc.
- Injection moulding industries.
- On steam line
- Suction coupling for material conveying (Plastic Granule Carrier Coupling)
- Full flow passage

Anwendungsbereiche

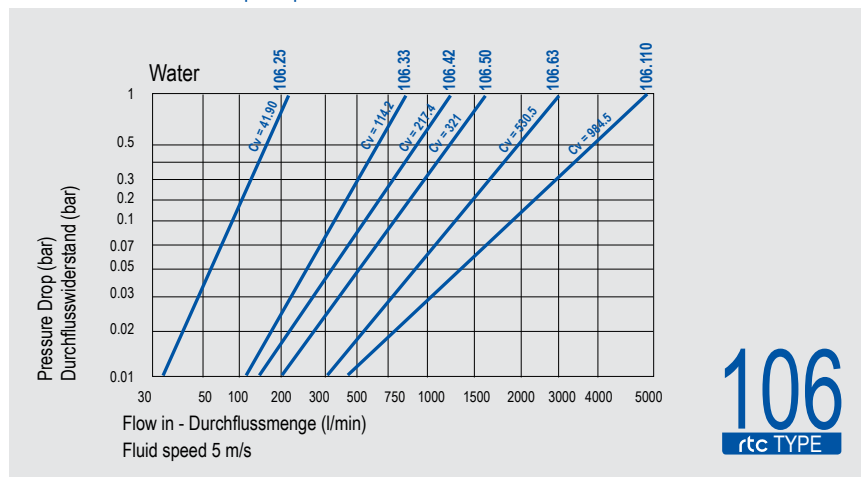
- Zuleitung für die Temperierung / Druckluft
- Kühlung mit Öl oder Wasser
- Kunststoffindustrie
- Dampfanwendungen
- Kupplung für Materialbeförderung (Kunststoffgranulat)
- Voller Durchgang

Material of 106.110

Socket Body - Kupplungsgrundkörper	Aluminium
Sleeve - Hülse	Aluminium
Plug - Nippel	Aluminium



Flow Rate vs Pressure Drop Graph / Durchflussrate vs Druckabfall



rtc TYPE 106

Cylindrical female thread socket / Kupplung mit Innengewinde zylindrisch



Socket / Kupplung

Size / Größe

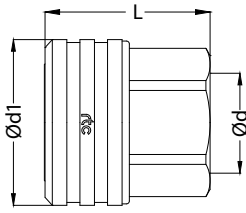
Order No / Bestellnr.

Ød

Ød1

L

HEX.



25	106.25 SFF 33	BSP 1	54	57	41
33	106.33 SFF 42	BSP 1-1/4	65	62	50
42	106.42 SFF 48	BSP 1-1/2	78	66	60
50	106.50 SFF 60	BSP 2	89	70	70
63	106.63 SFF 75	BSP 2-1/2	109	84	90
110	106.110 SFF 113	BSP 4	180	175	-

rtc TYPE 106

Cylindrical female thread socket with valve / Verschlusskupplung mit Innengewinde zylindrisch



Socket / Kupplung

Size / Größe

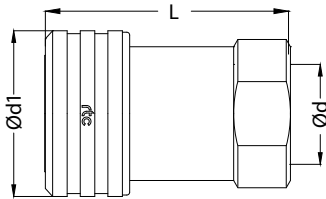
Order No / Bestellnr.

Ød

Ød1

L

HEX.



Double Shut-off

25	106.25 SFB 33	BSP 1	57	87	41
33	106.33 SFB 42	BSP 1-1/4	65	103	60

rtc TYPE 106

Cylindrical male thread socket / Kupplung mit Außengewinde zylindrisch



Socket / Kupplung

Size / Größe

Order No / Bestellnr.

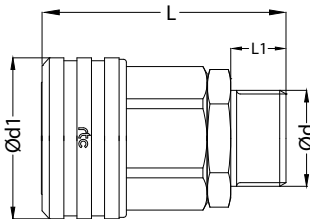
Ød

Ød1

L

L1

HEX.



25	106.25 SMF 33	BSP 1	54	84	19	41
33	106.33 SMF 42	BSP 1-1/4	65	91	19	50
42	106.42 SMF 48	BSP 1-1/2	78	98	20	60
50	106.50 SMF 60	BSP 2	89	110	25	70
63	106.63 SMF 75	BSP 2-1/2	109	131	27	90

rtc TYPE 106

Standard hose tail socket / Kupplung mit gerader Standard - Schlauchtülle



Socket / Kupplung

Size / Größe

Order No / Bestellnr.

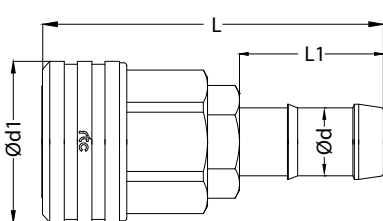
Ød

Ød1

L

L1

HEX.



25	106.25 SHF 25-HT8	25 mm	54	117	50	41
25	106.25 SHF 32-HT8	32 mm	54	117	50	41
33	106.33 SHF 32-HT8	32 mm	65	122	50	50
33	106.33 SHF 38-HT8	38 mm	65	122	50	50
42	106.42 SHF 44-HT8	44 mm	78	126	50	60
50	106.50 SHF 50-HT8	50 mm	89	149	50	70
63	106.63 SHF 63-HT8	63 mm	109	179	75	90

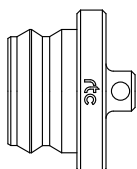
rtc TYPE 106

Dust cup for socket / Staubkappe für Kupplung

Dust cup / Staubkappe

Size / Größe

Order No / Bestellnr.



25	106.25 SD 00
33	106.33 SD 00
42	106.42 SD 00
50	106.50 SD 00
63	106.63 SD 00
110	106.110 SD 00



Cylindrical female thread plug / Nippel mit Innengewinde zylindrisch

TYPE 106 **rtc**

Plug / Nippel	Size / Größe	Order No / Bestellnr.	Ød	Ød1	L	HEX.
	25	106.25 PFF 33	BSP 1	45	61	41
	33	106.33 PFF 42	BSP 1-1/4	55	66	50
	42	106.42 PFF 48	BSP 1-1/2	65	74	60
	50	106.50 PFF 60	BSP 2	75	78	71
	63	106.63 PFF 75	BSP 2-1/2	90	83	84
	110	106.110 PFF 113	BSP 4	150	155	-



Cylindrical female thread plug with valve/ Verschlussnippel mit Innengewinde zylindrisch

TYPE 106 **rtc**

Plug / Nippel	Size / Größe	Order No / Bestellnr.	Ød	Ød1	L	HEX.
	25	106.25 PFB 33	BSP 1	45	88	41
	33	106.33 PFB 42	BSP 1-1/4	64	105	55

Double Shut-off



Cylindrical male thread plug / Nippel mit Ausengewinde zylindrisch

TYPE 106 **rtc**

Plug / Nippel	Size / Größe	Order No / Bestellnr.	Ød	Ød1	L	L1	HEX.
	25	106.25 PMF 33	BSP 1	45	88	19	41
	33	106.33 PMF 42	BSP 1-1/4	55	95	19	50
	42	106.42 PMF 48	BSP 1-1/2	65	106	20	60
	50	106.50 PMF 60	BSP 2	75	118	25	71
	63	106.63 PMF 75	BSP 2-1/2	90	130	27	84



Standard hose tail plug / Nippel mit gerader Standard - Schlauchtülle

TYPE 106 **rtc**

Plug / Nippel	Size / Größe	Order No / Bestellnr.	Ød	Ød1	L	L1	HEX.
	25	106.25 PHF 25-HT8	25 mm	45	122	50	41
	25	106.25 PHF 32-HT8	32 mm	45	122	50	41
	33	106.33 PHF 32-HT8	32 mm	55	127	50	50
	33	106.33 PHF 38-HT8	38 mm	55	127	50	50
	42	106.42 PHF 44-HT8	44 mm	65	131	50	60
	50	106.50 PHF 52-HT8	52 mm	75	149	50	71
	63	106.63 PHF 63-HT8	63 mm	90	178	75	84

